

WELDING | SMALL GRINDING | SMALL DEBURRING | SMALL DRY DUST

OVERVIEW

The Coral JET CLEAN DF extractor/collector is a **state-of-the-art system** that is **portable** and includes a manual compressed air cleaning system. The compressed air back pulse cleaning system extends the life of our special large surface area filter cartridges.

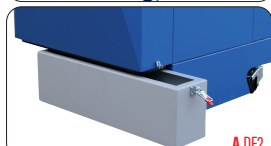
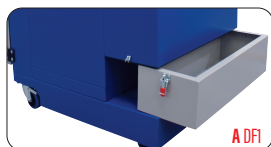
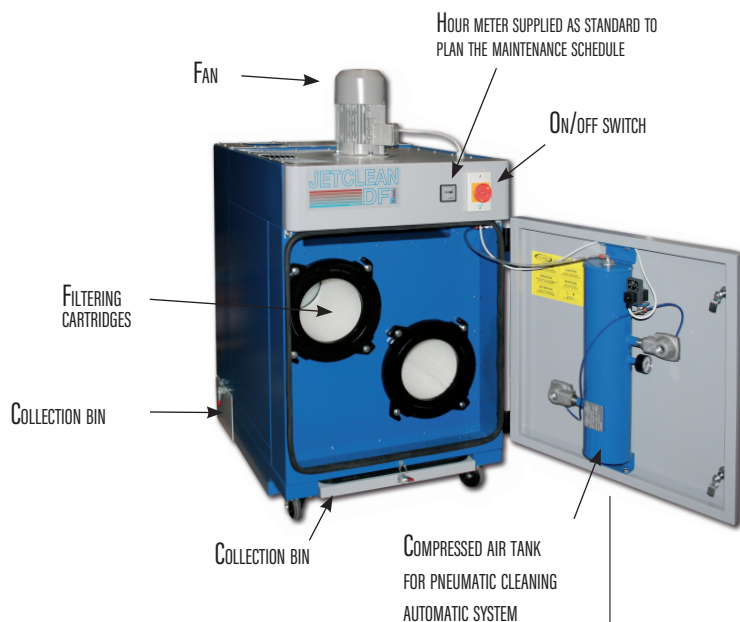
Maintaining filters at optimum efficiency has always been a problem for traditional collectors, especially in welding fume extraction and dust applications. The JET CLEAN DF has solved this problem and provides the operator with a quality system that can handle the most challenging applications.

POWERFUL & QUIET

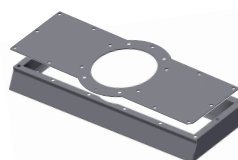
The Coral JET CLEAN DF is extremely quiet and features plug-n-go operation, combined with incredible maneuverability and powerful 1.0, 1.5 or 3.0 horsepower motors which provide up to an amazing 1890 CFM airflow. The Coral JET CLEAN DF is a **highly efficient** and **cost-effective** solution for a wide variety of process applications, including welding, sanding, grinding and deburring.

WORKING PRINCIPLE

Welding fumes are captured and extracted away from the welder by our patented EVOLUTION NO-SMOKE extraction arm. The fumes continue traveling through a dirty air inlet plenum where heavier particulate falls out of suspension from the air stream. The contaminated air then passes through a metal prefilter which acts as a spark arrester and the air then continues through the high efficiency cartridges, clean air is returned to the working environment. The Coral JET CLEAN DF also includes a **differential pressure gauge** to continuously monitor the condition of the filter cartridges.



OPTIONS

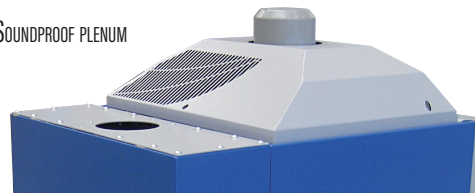


•INLET CONNECTION FOR ARM Ø8"
(For DF2 ONLY)



•PLASTIC HOOD WINGHOOD WITH LIGHT KIT

•SOUNDPROOF PLENUM



•PLENUM WITH ACTIVATED CARBON FILTER OR WITH ABSOLUTE FILTER HEPA H13



WELDING | SMALL GRINDING | SMALL DEBURRING | SMALL DRY DUST

JET CLEAN DF

High efficiency extraction and filtration of welding fumes, gases, vapors and aerosols

PERFORMANCE

| | JETCLEAN DF1 | | JETCLEAN DF2 | |
|-----------------------------|----------------|----------------|----------------|--|
| | DF1 0,75 | DF2 1,1 | DF2 2,2 | |
| POWER | 1 HP | 1,5 HP | 3 HP | |
| SUPPLY VOLTAGE | 110 V | 110 V | 220/440 V | |
| FREQUENCY | 60 Hz | 60 Hz | 60 Hz | |
| NO. OF REVOLUTIONS | 3600 | 3600 | 3600 | |
| FAN TYPE | PRM220 | PRM250 | PRM250 | |
| FLOW WITH 1 ARM D.150 | 856 c.f.m | 1109 c.f.m | / | |
| FLOW WITH 2 ARMS D.150 | / | / | 1345 c.f.m | |
| CARTRIDGE FILTER DIMENSIONS | Ø12.8" L=15.7" | Ø12.8" L=15.7" | Ø12.8" L=15.7" | |
| NO. OF FILTERS | 1 | 2 | 2 | |
| FILTER TYPE | CARTRIDGE | CARTRIDGE | CARTRIDGE | |
| FILTER FABRIC TYPE | 100% POLYESTER | 100% POLYESTER | 100% POLYESTER | |
| IFA/BGIA CLASSIFICATION | M-PES | M-PES | M-PES | |
| FILTERING SURFACE | 86 Sqft | 172 Sqft | 172 Sqft | |
| FILTRATION EFFICIENCY | 99,9% | 99,9% | 99,9% | |
| STORAGE CAPACITY FRONT DRUM | 2.3 Gal | 3.1 Gal | 3.1Gal | |
| STORAGE CAPACITY BACK DRUM | 3.9 Gal | 7.4 Gal | 7.4 Gal | |
| WEIGHT | 264 Lbs | 341 Lbs | 374 Lbs | |

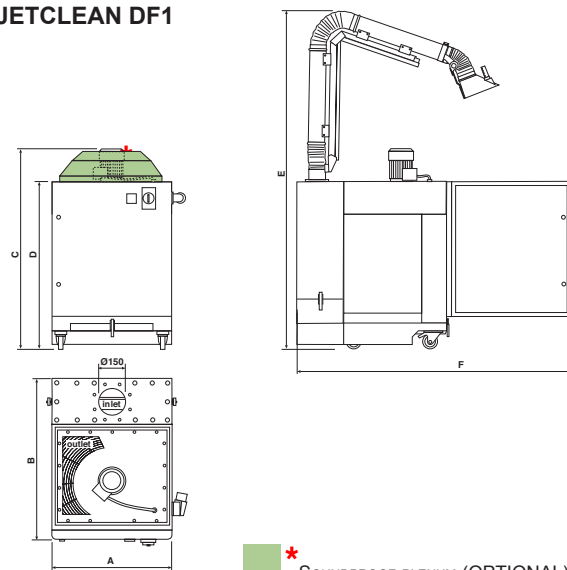
| | | | |
|-------------------------------|----|----|------|
| Sound level dB(A) | 72 | 74 | 74,5 |
| Sound level with plenum dB(A) | 65 | 70 | 70 |

DIMENSIONS

| JETCLEAN DF1 | A | B | C | D | E | F | INLET |
|-------------------|-------|-------|-------|-------|-------|-------|---------|
| JETCLEAN DF1-0,75 | 26.5" | 35.6" | 45.7" | 36.9" | 92.9" | 60.2" | 1 x Ø6" |

| JETCLEAN DF2 | A | B | C | D | E | F | INLET |
|------------------|-------|-------|-------|-------|--------|-------|-------------------------|
| JETCLEAN DF2-1,1 | 29.5" | 37.6" | 54.3" | 45.6" | 101.5" | 65.1" | 1 x Ø6" |
| JETCLEAN DF2-2,2 | 29.5" | 37.6" | 55.9" | 45.6" | 101.5" | 65.1" | 2 x Ø6" vers. from 3 HP |

JETCLEAN DF1



JETCLEAN DF2

