

GRINDING | DEBURRING | POLISHING | SANDING | THERMAL CUTTING | WELDING | DRY DUST

OVERVIEW

The Coral IPERJET DF dust collection system is unique as we designed it to have horizontally fixed filter cartridges which makes servicing much easier for your maintenance team.

The Coral IPERJET DF is suitable for applications that require the removal and filtration of welding fumes and dust as well as of small quantities of chips from many different applications.

The Coral IPERJET DF collection system is the ideal solution for all applications where extraction, collection and removal of pollutants are required so that indoor air can be returned to the working environment. With today's utility costs constantly rising, evacuating conditioned and contaminated air from the plant floor to the outdoors is no longer feasible. The Coral IPERJET DF allows filtered air to be safely returned to the work environment.

WORKING PRINCIPLE

The Coral IPERJET DF is designed so that incoming air enters the top of the unit and travels down the back side, the contaminated air then makes a 180° turn and travels straight up into the filter chamber. Due to the rapid change in direction, any heavy solids fall out of the air stream and are deposited into a first stage collection bin located at the back of the unit.

Contaminated air then passes through our specially designed high efficiency filter cartridges where 99% of the harmful solids are removed.

The Coral electronically controlled pneumatic back pulse system keeps our high efficiency filter cartridges operating at peak efficiency. The controller constantly monitors the condition of the filter cartridges by using differential pressure, always checking the inlet pressure against the outlet pressure. Once the controller detects that the filter cartridges are clogging, a cleaning cycle is initiated. During the cleaning cycle, high pressure compressed air (10 bar - 150 psi) is released inside the filter cartridges creating a shock wave that forcibly pushes the collected solids off the cartridges. The solids fall by gravity to a second lower collection bin for removal.

The Coral high-performance fan mounted on the top of the IPERJET DF assures a high suction capacity and quiet operation.

HORIZONTAL CARTRIDGES

What makes our system unique is the horizontal mounting of the specially designed Coral filter cartridges. This allows operators easy access and a quick maintenance of the filtering cartridges when required. Simply open the door, loosen four retaining bolts, twist and remove.



COLLECTION BINS



FIBER FILTERING CARTRIDGES

The horizontal position of the cartridges allows an easy access and a quick maintenance of the filtering area.

ON/OFF
THERMAL SWITCH



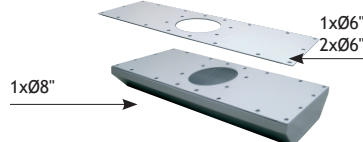
IPERJET DF 9

OPTIONS

•INLET CONNECTION



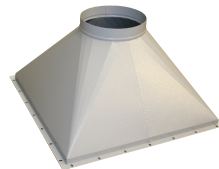
•INLET CONNECTION FOR ARMS. FOR IPERJET DF4 AND DF 4R ONLY.



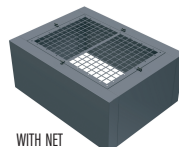
•EVOLUTION No-SMOKE ARM For IPERJET DF4 AND DF 4R ONLY



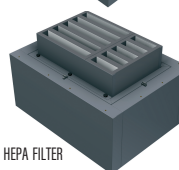
•DUCTING KIT FOR CLEAN AIR OUTLET



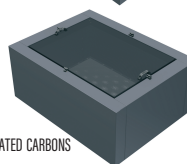
•SOUNDPROOF PLENUM



WITH NET



WITH HEPA FILTER



WITH ACTIVATED CARBONS

•FIRE EXTINGUISHER

TO BE SIZED ON APPLICATION



•ELECTRIC CONTROL BOARD

FOR DF4 AND DF6 (STANDARD FOR DF9)



INLET

OUTLET



CORAL U.S.A. - Controlled Air Design
Main: +1800 635-0298 Cell: +1 919 607-6765
www.controlledairdesign.com

GRINDING | DEBURRING | POLISHING | SANDING | THERMAL CUTTING | WELDING | DRY DUST

IPERJET DF

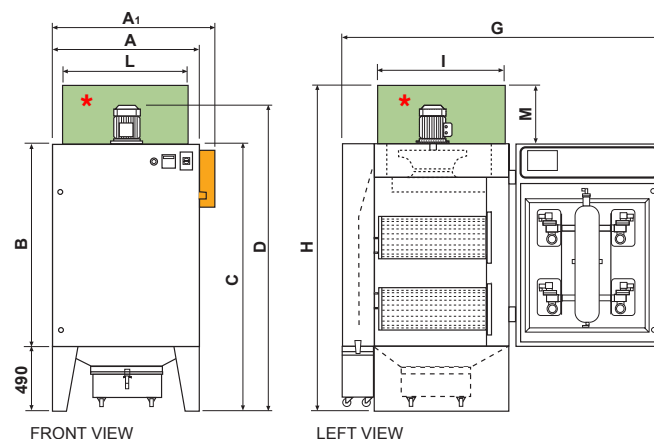
Welding Fume and dust collector with 4, 6 or 9 horizontal cartridges

DIMENSIONS

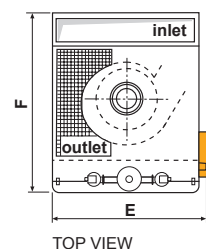
IPERJET	A	A1	B	C	D	E	F	G
DF4 - DF4 TH	36.6"	-	44.1"	63.3"	75.3"	39.9"	47.6"	82.1"
DF6 - DF6 TH	43.3"	-	51.7"	71"	83.8"	46.8"	47.6"	89"
DF9 - DF9 TH	51.1"	59"	58.6"	77.9"	92.1"	-	51.1"	100.3"

IPERJET	H	I	L	M
DF4 - DF4 TH	80.4"	32.9"	34"	17"
DF6 - DF6 TH	92.8"	33"	40.8"	21.7"
DF9 - DF9 TH	98.8"	33"	50.9"	21.7"

Dimensions (inches)



IPERJET DF TH = Thermalcut version



TOP VIEW

- ★ •SOUNDPROOF PLENUM (OPTIONAL)
- •ELECTRIC CONTROL BOARD (STANDARD ONLY IN DF9)

PERFORMANCE

IPERJET	DF4/R	DF4 TH	DF6	DF6 TH	DF9	DF9 TH
Power [HP]	4	3	5,5	4	10	5,5
Power supply voltage 3Ph [V]	220/440	220/440	220/440	220/440	460	220/440
Frequency [Hz]	60					
RPM	3600	3600	3600	3600	3600	3600
Type of fan	PRA250	PRA250	PRA280	PRA250	PRA320	PRA280
Nominal air flow [cfm]	1770	1180	2360	1475	3835	2065
Usefull static pressure [InchH ₂ O]	5.1	7.08	3.9	5.9	5.1	5,9
Peso [lbs]	847	1012	1034	1240	1364	1654
Bin dust holding capacity (gal)	21+22	21+22	23+30	23+38	27+36	27+36
Working tank header pressure	116 psi					
Electrical feeding of valve	24 V					
Sound level dB(A)	78	77	81	77	85	79
Sound level with afon dB(A)	73	70	75	70	79	73

CARTRIDGES

Number of cartridges	4	4	6	4	9	9
IFA/BGIA rating	M PES Polyester	M PES+PTFE/ MEMBRANE Polyester-Teflon membrane	M PES Polyester	M PES+PTFE/ MEMBRANE Polyester-Teflon membrane	M PES Polyester	M PES+PTFE/ MEMBRANE Polyester-Teflon membrane
Cartridges dimensions [Inch]	Ø12.8" x 29.5"	Ø12.8" x 29.5"	Ø12.8" x 29.5"	Ø12.8" x 29.5"	Ø12.8" x 29.5"	Ø12.8" x 29.5"
Filtering surface [Sqft]	398	516	775	516	1162	775
IFA/BGIA rating		M NANOTECH cellulose with nanofibers		M NANOTECH cellulose with nanofibers		M NANOTECH cellulose with nanofibers
Cartridges dimensions [Inch]		Ø12.8" x 25.9"		Ø12.8" x 25.9"		Ø12.8" x 25.9"
Filtering surface [Sqft]		904		904		1356